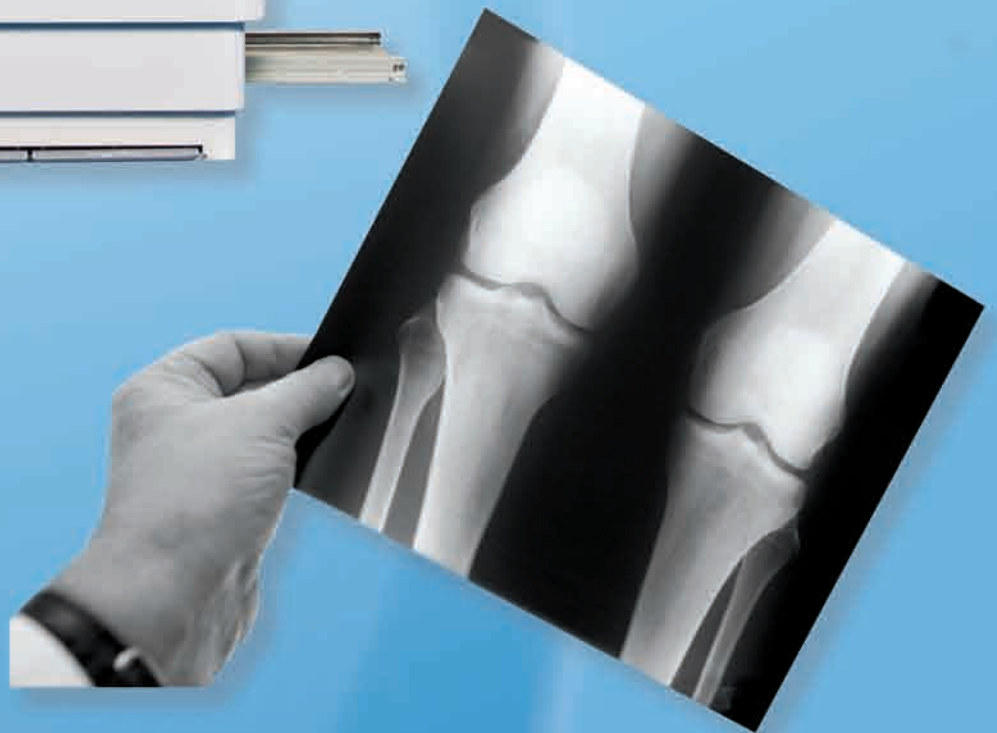


# TXR

## Imaging Solutions

Flexible Configurations  
To Meet The Needs Of All  
Practitioners





# Cost Effective Alternatives with No Compromise in Quality

## Tube Mounts / Stands

The TXR family of tube stands will adapt to any clinical situation. From our S-CTM ceiling tube mount to our basic 13-SM-84E or any tube stand in between, you'll find a model that will be functional and work within your budget.

### S-CTM Ceiling Tube Mount — Standard Features

- Far reaching ceiling/bridge rails and telescoping sections
- 59" (150 cm) vertical travel, 138" (350 cm) transverse
- Slim profile, space saving aluminum telescoping sections with silent drive
- User friendly controls with digital displays
- Flexibility, accommodates stretcher or wheel chair patients comfortably and effortlessly



### S-FMT Floor Mount Tube Stand — Standard Features

- 180° Column rotation and 11.8" (30 cm) transverse tube arm travel
- Vertical travel 15.7" to 63.8" (40 cm to 162 cm)
- Conveniently located push buttons release magnetic locks that control vertical, horizontal and tube rotation
- 86.6" (220 cm) Floor track



### C-SM Heavy Duty Rotate Tube Stand — Standard Features

- Floor to wall or floor to ceiling configuration
  - 10' (305 cm) Rails
  - 180° Column rotation with 10" (26 cm) transverse tube arm motion
  - Magnetic locks accessible at handle bar controls longitudinal, transverse, vertical and tube rotation
  - Vertical travel of 16" to 78" (41 cm to 198 cm)
- Option:** — 12' (366 cm) Rails



### 13-CT Heavy Duty Non-Rotate Tube Stand with Transverse Arm — Standard Features

- Same as C-SM with the exception of column rotation

### 13-RA-84 Heavy Duty Non-Rotate Tube Stand — Standard Features

- Same quality features as C-SM with exception of column rotation and transverse tube arm motion, supplied with 8' (244 cm) rails
- Options:** —10' or 12' (305 cm or 366 cm) rails



### 13-SM-84E Medium Duty Floor Ceiling Tube Stand — Standard Features

- Floor to wall or floor to ceiling mount
- 6' (183 cm) Rails
- Magnetic locks control longitudinal, vertical and tube rotation



# Cost Effective Alternatives with No Compromise in Quality

## Tables

The S-HL 4 way float top elevating table and our very functional 13-FBT-4WFT 4 way float top fixed height tables with varying table top lengths were designed to enable a comfortable fit in any size room. The TXR tables are ideally suited for hospitals, clinics, orthopaedic and general practices.

The 13-FBT stationary top table will meet the needs of a small practice with limited space.

Matching any table with one of our quality tube stands and wall stands will deliver a system to meet the needs and budget of any practice.

### □ S-HL 4 Way Float Top Elevating Table

#### — Standard Features

- 750 Lb. (340 kg) Patient load
- 86.5" x 31.5" (220 cm x 80 cm) Float top table with 43.4" (110 cm) longitudinal and 9.5" (24 cm) lateral table top movement
- Extensive vertical travel of 20.25" (52 cm)
- Magnetic table top locks
- Collision detector for table top
- Super speed bucky with 10:1 ratio grid and heavy duty cassette tray moves along table base

**Options:** — Various Grids  
— AEC



S-HL 4 WAY FLOAT TOP ELEVATING TABLE

### □ 13-FBT-4WFT-E Heavy Duty 4 Way Float Top Table

#### — Standard Features

- 78" x 30" (198 cm x 76 cm) Float top with extruded table top rails
- Table top movement controlled by foot treadle and secured in place with magnetic lock
- Grid cabinet with 103 line, 10:1 ratio grid and heavy duty cassette tray moves along table base

**Options:** — Super Speed Bucky  
— Various Grids  
— AEC



13-FBT-4WFT-E HEAVY DUTY 4 WAY FLOAT TOP TABLE

### □ 13-FBT-4WFT Medium Duty 4 Way Float Top Table

#### — Standard Features

- 72" x 27.5" (183 cm x 70 cm) Float top table
- Grid cabinet with 103 line, 10:1 ratio grid and heavy duty cassette tray moves along table base

**Options:** — Super Speed Bucky  
— Various Grids  
— 60" Long Table Top  
— 12" (30.5 cm) Drop Leaf  
— AEC



13-FBT-4WFT  
MEDIUM  
DUTY 4 WAY  
FLOAT TOP  
TABLE

### □ 13-FBT Medium Duty Stationary Top Table — Standard Features

- 72" x 27.5" (183 cm x 70 cm) Table top
- Heavy duty grid cabinet with 103 line, 10:1 ratio grid and heavy duty cassette tray moves along table base

**Options:** — Super Speed Bucky  
— Various Grids  
— 60" Long Table Top  
— 12" (30.5 cm) Drop Leaf  
— AEC



13-FBT MEDIUM  
DUTY  
STATIONARY  
TOP TABLE



# Cost Effective Alternatives with No Compromise in Quality

## Wall Stands

The wide selection of TXR wall stands will compliment any tube stand and table. Flexibility allows for preference of style, room configuration and budget

### 13-BF-7 17E Wall Stand — Standard Features

- Floor to wall mounted, or free standing 84" (213 cm) counterbalanced column
- Heavy duty 17" x 17" (43 cm x 43 cm) grid cabinet with 103 line, 10:1 ratio grid and heavy duty cassette tray
- Magnetic locks

### 13-BF-7 Tilt Ease III Wall Stand — Standard Features

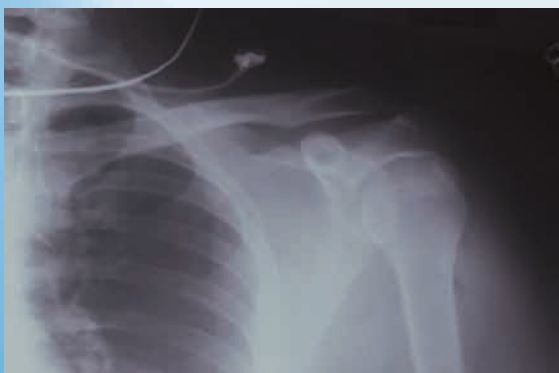
- Same quality features as 13-BF-7 except supplied with tilting grid cabinet (tilt is locked in place by heavy duty manual disc lock)

### 13-BF-7 EURO Wall Stand — Standard Features

- Same quality features as 13-BF-7 17E except grid cabinet mounts off side to accommodate smaller rooms

### Options, All Wall Stands:

- 17" x 17" (43 cm x 43 cm) Super speed bucky
- 14" x 36" (36 cm x 91 cm) Grid cabinet (not available on tilt)
- 14" x 36" (36 cm x 91 cm) Reciprocating bucky (not available on tilt)
- Various Grids
- AEC
- Head Clamp





## Cost Effective Alternatives with No Compromise in Quality

### URS – Universal Radiographic System

The URS is a flexible, versatile system that increases patient thru-put, is affordable and easy to operate. The URS performs upright views at 40" or 72" SID (102 cm to 183 cm), weight bearing views without the use of a stool, table top extremity views with the cabinet in a horizontal position and supine views with the optional table.



#### URS – Standard Features

- Rotating cross arm supports tube at one end and bucky at other end, beam is always centered
- Variable SID from 40" to 72" (102 cm to 183 cm), accommodates all views in standing, sitting or lying position (with optional table)
- Magnetic locks control tube and arm rotation
- Magnetic brake push button release for bucky rotation
- Super speed bucky, 103 line, 10:1 ratio grid and heavy duty cassette tray



### An Array of Generators to Complete the System

To complete the ideal system configuration, TXR offers a selection of 9 different generators, refer to our generator literature.

Our battery operated generators deliver required output when incoming power is not available to operate a line powered generator.



The SHF series of high frequency generators are available in power ratings of 32, 40, 50, 64 or 80 kW. Standard features include APR (Anatomical Programming), hand switch and table mount. The high quality, reliable generators are backed by our UL, CE and FDA listings.

The TXR standard frequency 400 mA or 500 mA generators deliver added power.



Please consult with your local TXR dealer and our generator literature to determine which model is best suited for your practice.



**Cost Effect Alternative  
with No Compromise in Quality**

## **At TXR We Realize That No Two Systems Are Ever Used The Same**

For the past 35 years TXR has continued to develop an extensive line of radiographic equipment to fit the needs of varying practitioners. The TXR broad selection of tables, tube stands, wall stands and generators will accurately configure a system to adapt to the needs and size of any practice.

Our design and manufacturing criteria has always been to incorporate reliability, value, safety, fast delivery and first class service.

## **Serving The World Wide Market For 35 Years**



### **TXR Mission Statement**

*Provide prompt delivery of reliable,  
high quality, cost effective imaging systems  
to fill the needs of the world wide market.*



Tingle X-Ray LLC

5481 Skyland Blvd.,E • Cottondale, AL 35453 • Phone 205-556-3803 • FAX 205-556-3824  
1-800-897-9729 • [www.txr.com](http://www.txr.com) • [sales@www.txr.com](mailto:sales@www.txr.com)